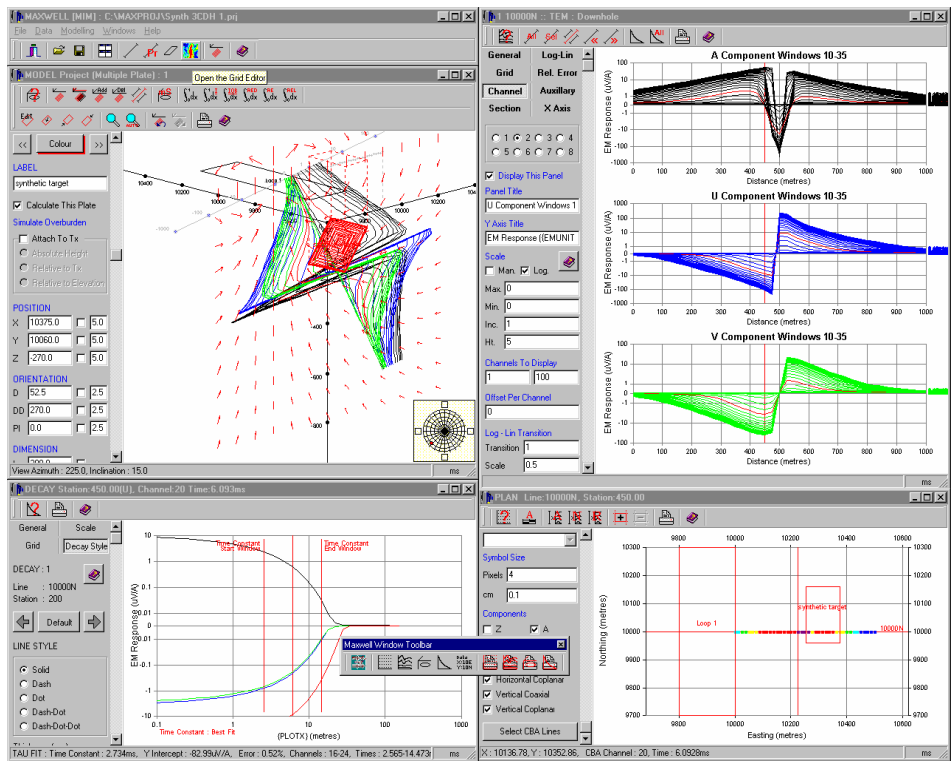




# Maxwell 4.0

## Modeling, Presentation and Visualization of EM and Electrical Geophysical Data

- Work with time or frequency domain data – any EM survey with any instrument type
- Ground or airborne, borehole, moving-loop, fixed-loop
- 3-D visualization of plate and other models with OpenGL
- Read and write industry standard file formats, including AMIRA, Geosoft, PEM, Arcview shape
- Modeling of B or dB/dt responses in any units for loop or dipole tx and rx including all normalization required
- Linked plan, profile, section, decay and model displays
- Utilities to load EM data into Geosoft database
- Totally unique forward and inverse plate modeling
- Import and create grid files for display in plan or section
- Execute third-party modeling routines from within Maxwell
- Jointly model data from different EM systems
- Automated overburden response calculation features
- Powerful tool to set or check attributes of each field/model line.
- High quality hardcopy
- Plot primary field lines
- Decay and spectrum analysis, decay constant calculation
- Carry out synthetic modeling
- Build templates to speed graphical presentation
- Save templates, models, system descriptions and sessions
- Custom tools and file-handling routines developed
- Regularly updated on-line help, tutorial, documentation



Maxwell has been written by people who understand what's required of EM geophysical processing and modeling software. It is a unique environment that makes EFFICIENT use of your time and effort. Maxwell has grown into the 21st Century with new features and user support that make it a tool that you can't afford not to have if you interact with EM data.

### *Geophysical Technology Development for Mineral Exploration, Groundwater and the Environment.*



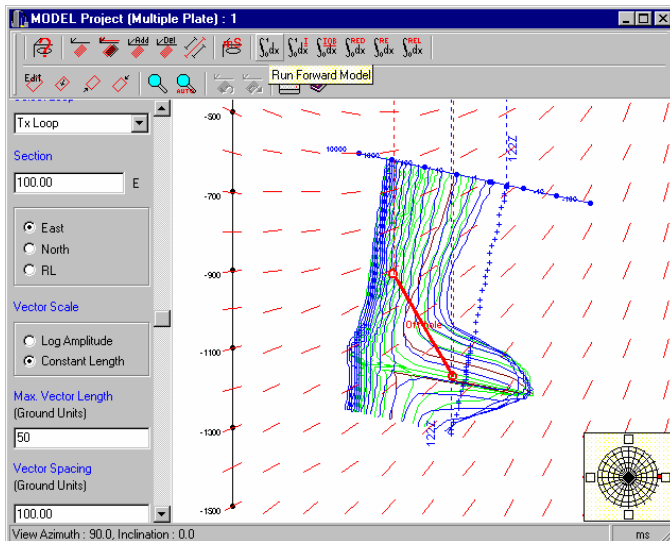
EMIT is a Geosoft Plus Partner and Maxwell provides a powerful interface to Geosoft's Oasis Montaj v5+.

## PLAN

View the location of all data, airborne or ground. Define sub-areas for modeling or display. Create effective colored plans of a particular channel, frequency or component to illustrate anomalies and facilitate modeling & quality control. Grid, contour and image data within Maxwell or import a grid file to use as a base for the plan.

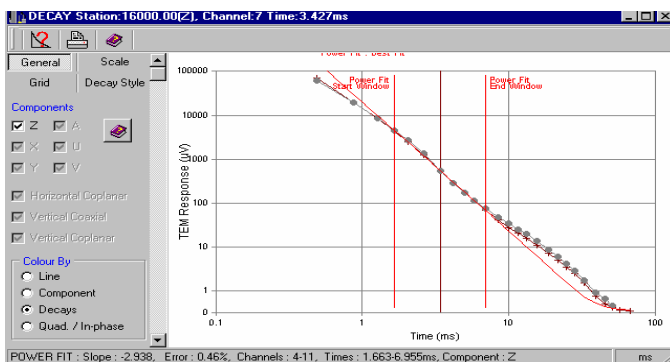
## MODEL

Plate and "plate in host" multi-ribbon thin sheet models included, layered earth to be included shortly. Run external modeling algorithms (including plate, prism, 2.5-D and 3-D) with this powerful 3-D graphic interface. Drag-and-drop plate models. Automatically setup variable overburden models, even for moving-loop surveys. Create a synthetic survey simply with any geometry, transmitter waveform, units, window times and frequencies. Select tx-rx horizontal and vertical separation to model airborne responses. Plot primary field lines in any plane. Plot field and model data in the same presentation with user-selection of colors and symbols. Import files of loop coordinates and borehole geometry information.



## DECAY/SPECTRUM

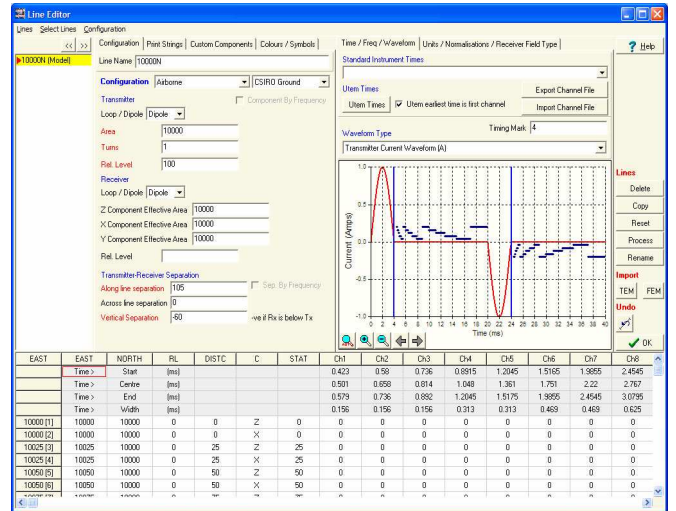
Automatically bring up decays by double-clicking in a profile window. Compare field and model responses. Calculate exponential decay constants and power law decay rates over ranges of times. View EM response versus frequency for frequency domain data.



**SERVICE & SUPPORT** EMIT is keen to incorporate users' suggestions into its Maxwell software and to respond quickly to questions. Updated software and help files are regularly emailed to Maxwell users.

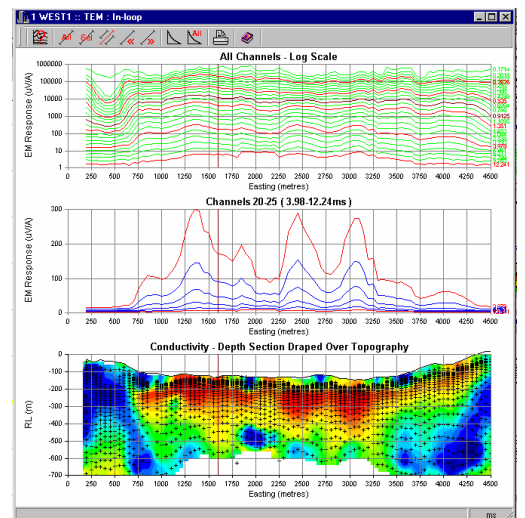
## MAXWELL LINE EDITOR

A powerful tool to set parameters of model and field data lines in Maxwell. Set the properties of the EM system so that modeling is straightforward. Check the actual values of the field data and model responses — they can be changed, deleted or sorted. Tool to speed the import of EM system waveforms and window times. Set or check all the relevant properties of the data including units, normalizations, transmitter and receiver details.



## PROFILE/SECTION

Create the style of profile you want to look at on screen and in hardcopy. Logarithmic or linear scales, multiple panels, ranges of channels and frequencies.



Color by channel number, frequency, component, line. Plot auxiliary parameters such as power line noise monitor, transmitter current or other geophysical data. Add sections as located grids with selectable color palette, draped on topography if required. Choose scales, symbols, grids, line styles, labels, title blocks and logos. Save the plot style in a template for use with other data. Batch plot all lines from your project without having to setup each one. Automatically extracts annotation values from your data.

## THIRD-PARTY MODELING

Maxwell provides graphical interfaces which can be employed with third-party or in-house modeling codes. The Maxwell GUI allows the design and visualization of models that include conductive plates, prisms, layered hosts and 2.5-D and 3-D meshes. Maxwell can launch the modeling algorithms and retrieve the results seamlessly.